



UNIVERSITY OF TORONTO
LESLIE DAN FACULTY OF PHARMACY



UC San Diego Extension



WHO Collaborating Centre
for Governance, Accountability and Transparency
in the Pharmaceutical Sector

Combatting Corruption and Promoting Equity in the Health Sector

July 10 - 11, 2019
UC San Diego

How the Health Sector is Vulnerable: Case Studies and Group Work

Jillian Kohler, MA, PhD
Tim Mackey, MAS, PhD
Mostafa Hunter

Case Study Learning Objectives

- Assess different case studies of corruption in the health sector and compare and contrast
- Identify corruption problem streams, stakeholders, types of corruption, data points, and potential anti-corruption interventions
- Analyze case studies from different perspectives of supply chain, community health, and patient-centered approaches

Corruption Case Studies

Health Sector Challenges



Drug Supply Chain: Ensuring the integrity of the pharmaceutical and health commodity supply chain. Problems include procurement, falsified and substandard medicines, drug marketing, etc.



Community Health: What is the risk of corruption in a Zambian community maternal child health clinic? What are the unique risk factors and corruption types in these populations?



Patient Perspective: What are key actors and decision points when patients encounter corruption in the hospital setting? Why do these choices end up in distorted results?



Case Study Elements

Characteristics to Assess

Stakeholders: Who are the actors/stakeholders who participate, are impacted, and/or make decisions in the health corruption problem stream. What are the roles & responsibilities

Types of Corruption: What types of corruption manifest in the problem stream. They can be general (e.g. bribery, collusion, theft, etc.) or can be specific to the stream (e.g. falsified medicines, fund financial mismanagement) and what is result?

Interventions?: What anti-corruption interventions might be available and how do they adequately address the unique perspective of the problem stream? How does the intervention map to a risk-based framework?

Other characteristics for consideration

1. What is the level of transparency and accountability in the system?
2. What type of governance structure impacts the presence or corruption
3. How does this impact health equity or UHC in the broader context?
4. Think **ACTA**?

General Case Study Framework - Pharma

TYPES OF CORRUPTION

Procurement

Formulary
Decisions

Overutilization
due to COI/FI

FS Medicines

Stockouts/
Diversion

STAKEHOLDERS

Public



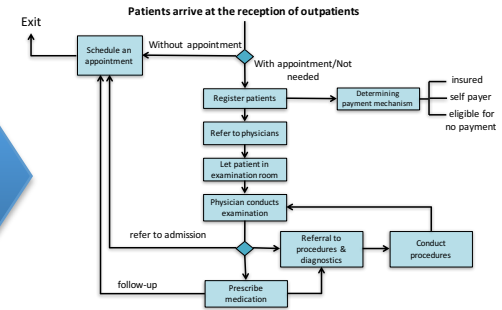
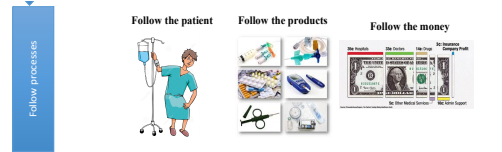
Private



Individual/Provider



SOLUTIONS?



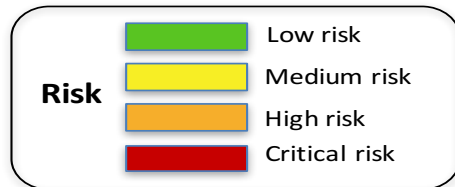
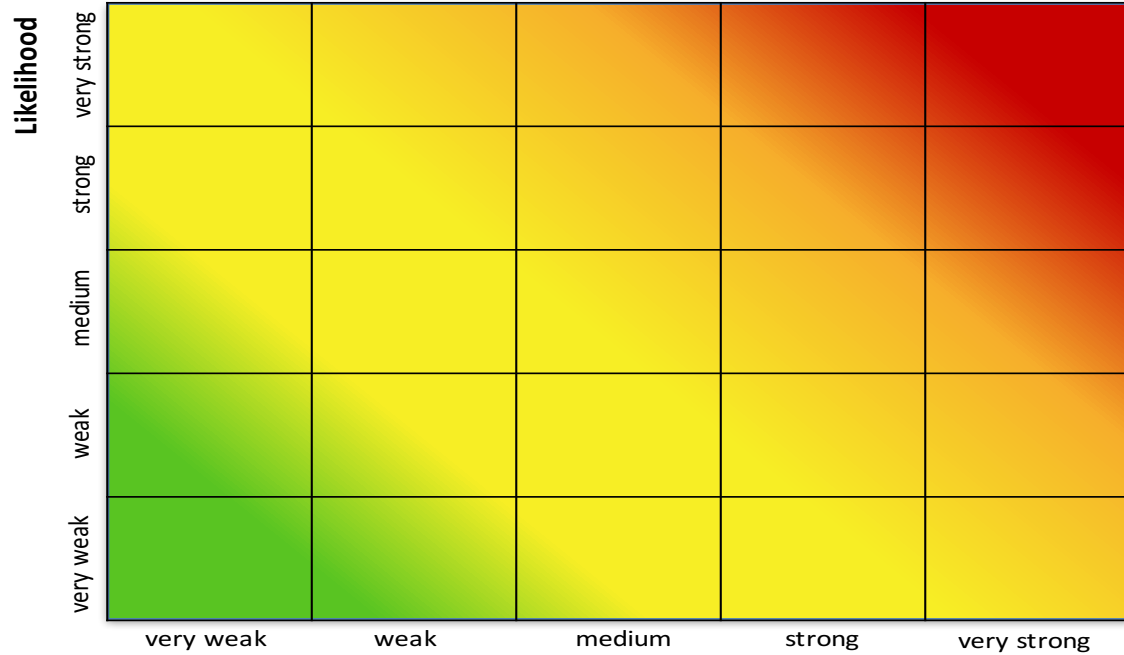
Technology

Interventions



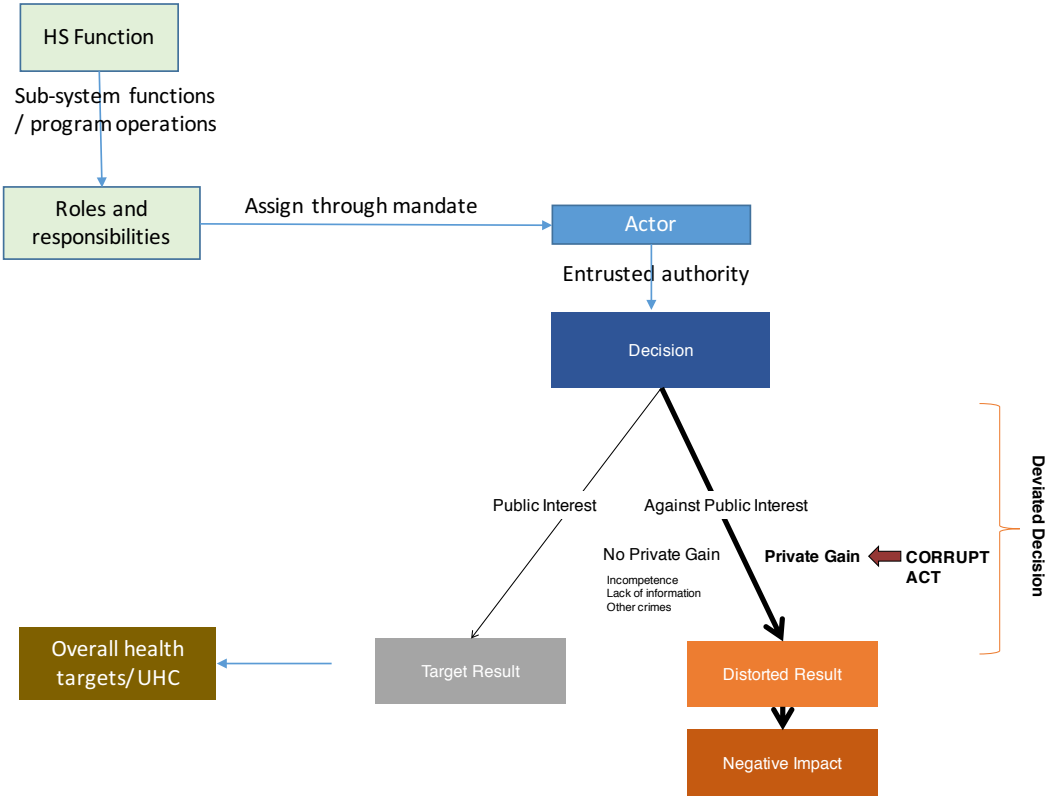
Global Governance and Perspective?

Issues to Consider – Risk-based Framework



Issues to Consider – Mapping Actors and Decision Points

Decision/ action point	Potential Actor
Schedule an appointment	Receptionist
Register patients	Receptionist
Determine payment mechanisms	Receptionist/accountant
Refer to physicians	Receptionist, nurse
Let patient in examination room	Nurse/ Nurse assistant
Conducts examination	Physician
Prescribe medication	Physician
Referral to diagnostic procedures	Physician
Referral to further interventions	Physician
Appointment for diagnostic procedures and interventions	Receptionist/ administrator
Conduct diagnostic procedures	Physician / technician
Admission	Receptionist/ administrator



General Instructions

- **Pick a type of corruption (no more than 1-2):** As a group, use the risk-based framework to select a type of corruption to address in your problem stream
- **Identify stakeholders:** Map to actors and decision points involved in your corruption type and problem stream (use provided white boards). Feel free to identify decision points that are susceptible to corruption
- **Solutions:** What anti-corruption solutions are possible? If you don't know, discuss types and feasibility with your facilitator
- **Group Presentations:** Plan for *5 min* presentation on your group work, specifically describing the health corruption problem (why it should be prioritized), who are the actors and key decision points, and what solutions might exist
- **Time:** Groups will have approximately 35 mins for each problem stream

Next:
Pick a Problem Stream and
Facilitator!